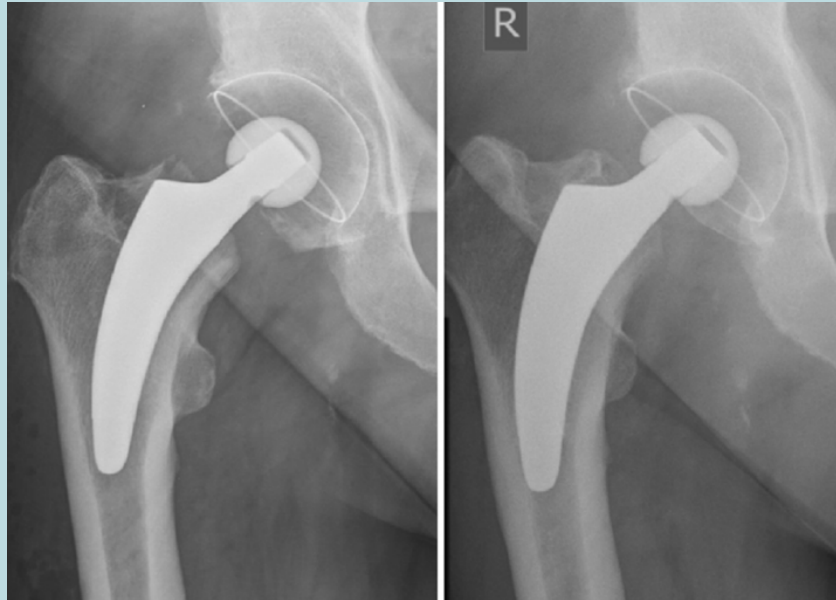


On register at national health surveillance agency



Mid-term migration pattern of a calcar, guided short stem, a five year.



RM Pressfit vitamys

Uncemented, elastic acetabular cup with monoblock design, made of low-abrasion plastic material ¹ (vitamin-E-stabilised highly cross-linked polyethylene)

Ceramic head

Femoral head that moves very easily and with low friction in the acetabular cup due to its highly polished surface ¹

optimys

Uncemented short stem made of titanium, coated with titanium plasma spray and calcium phosphate to allow bone ongrowth on the prosthesis and anchoring in the bone ¹

For further information on the implants you have received, go to:

www.my-artificial-joint.com

Reference

¹ www.bonepreservation.com