

GLOBAL[®]
biomedica

Line of spinal disc
implants in 3D-printed
Titanium[®]

Cervical and Lumbar



**BMD Titanium
ACIF Implant**



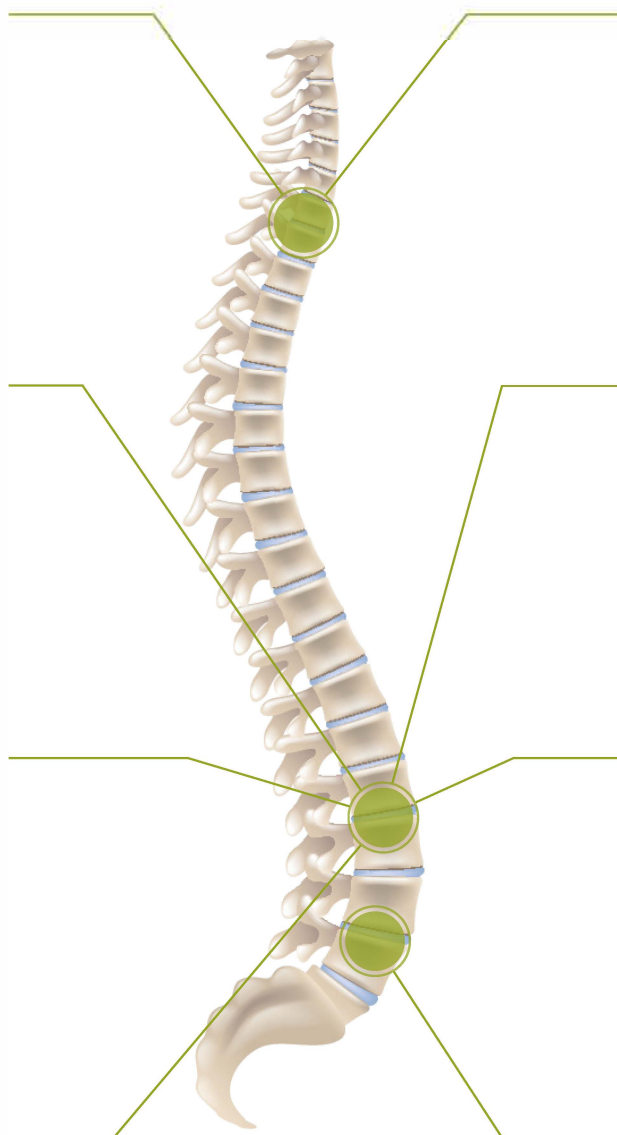
**BMD Titanium
TLIF Implant**



**BMD Titanium
TLIF GW Implant**



**BMD Titanium
LLIF Implant**



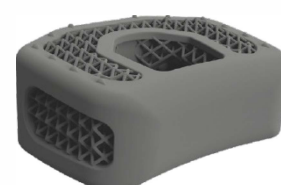
**BMD Titanium
ACIF GW Implant**



**BMD Titanium
PLIF Implant**



**BMD Titanium
PLIF GW Implant**



**BMD Titanium
ALIF Implant**

3D-printed intervertebral fusion Global Titanium Implants®



GLOBAL[®]
biomedica

ATTiS
M E D I C A L

©2020 GLOBAL BIOMEDICA s.r.o. All rights reserved.

All content herein is protected by copyright, trademarks and other intellectual property rights, as applicable, owned by or licensed to GLOBAL BIOMEDICA or its affiliates unless otherwise indicated, and must not be redistributed, duplicated or disclosed, in whole or in part, without the express written consent of GLOBAL BIOMEDICA. This material is intended for health care professionals, the GLOBAL BIOMEDICA sales force and authorized representatives. Distribution to any other recipient is prohibited. For product information, including indications, contraindications, warnings, precautions, potential adverse effects and patient counseling information, see the package insert and www.globalbmd.com. Check for country product clearances and reference product specific instructions for use.

Surgical Technique Guide – BMD Titanium TLIF GW Implant[®], Rev. 2024-07-04 v. 1.4